



**Year 9**  
***Pathways***  
**2024-2026**  
**Assembly**  
**22 June 2023**



# Opening Prayer

Lord, we pray that You would give us all your insight and wisdom in the choices we will be making next year. Lead us along the way that You have prepared for us, for we know that You have a path that You would wish us to follow that would lead us to success and happiness. May our lives be used for Your praise and glory and this I ask in Jesus' name.

Amen

# A reminder

## **Why change Pathways?**

- Disruption in education due to COVID means students have not had the chance to gain a depth of knowledge in each subject.
- Current Year 9 students have found it much harder to make choices.

## **Why keep key elements of Pathways?**

- Informed choices
- Flexibility for students
- Introduction to new subjects

# Academic calendar 2023/24 UK

## Timings for Year 9 2023 - 2024

2023				2024							
September	October	November	December	January	February	March	April	May	June	July	August
1 Fr	1 Su	1 We	1 Fr	1 Mo <small>New Year's Day</small>	1 Th	1 Fr	1 Mo <small>Easter Monday</small>	1 We	1 Sa	1 Mo	1 Th
2 Sa	2 Mo	2 Th	2 Sa	2 Tu	2 Fr	2 Sa	2 Tu	2 Th	2 Su	2 Tu	2 Fr
3 Su	3 Tu	3 Fr	3 Su	3 We	3 Sa	3 Su	3 We	3 Fr	3 Mo	3 We	3 Sa
4 Mo	4 We	4 Sa	4 Mo	4 Th	4 Su	4 Mo	4 Th	4 Sa	4 Tu	4 Th	4 Su
5 Tu	5 Th	5 Su	5 Tu	5 Fr	5 Mo	5 Tu	5 Fr	5 Su	5 We	5 Fr	5 Mo
6 We	6 Fr	6 Mo	6 We	6 Sa	6 Tu	6 We	6 Sa	6 Mo <small>Early May Bank Hol.</small>	6 Th	6 Sa	6 Tu
7 Th	7 Sa	7 Tu	7 Th	7 Su	7 We	7 Th	7 Su	7 Tu	7 Fr	7 Su	7 We
8 Fr	8 Su	8 We	8 Fr	8 Mo	8 Th	8 Fr	8 Mo	8 We	8 Sa	8 Mo	8 Th
9 Sa	9 Mo	9 Th	9 Sa	9 Tu	9 Fr	9 Sa	9 Tu	9 Th	9 Su	9 Tu	9 Fr
10 Su	10 Tu	10 Fr	10 Su	10 We	10 Sa	10 Su	10 We	10 Fr	10 Mo	10 We	10 Sa
11 Mo	11 We	11 Sa	11 Mo	11 Th	11 Su	11 Mo	11 Th	11 Sa	11 Tu	11 Th	11 Su
12 Tu	12 Th	12 Su	12 Tu	12 Fr	12 Mo	12 Tu	12 Fr	12 Su	12 We	12 Fr	12 Mo
13 We	13 Fr	13 We	13 We	13 Sa	13 Tu	13 We	13 Sa	13 Mo	13 Th	13 Sa	13 Tu
14 Th	14 Sa	14 Tu	14 Th	14 Su	14 We	14 Th	14 Su	14 Tu	14 Fr	14 Su	14 We
15 Fr	15 Su	15 We	15 Fr	15 Mo	15 Th	15 Fr	15 Mo	15 We	15 Sa	15 Mo	15 Th
16 Sa	16 Mo	16 Th	16 Sa	16 Tu	16 Fr	16 Sa	16 Tu	16 Th	16 Su	16 Th	16 Fr
17 Su	17 Tu	17 Fr	17 Su	17 We	17 Sa	17 Su	17 We	17 Fr	17 Mo	17 We	17 Sa
18 Mo	18 We	18 Sa	18 Mo	18 Th	18 Su	18 Mo	18 Th	18 Sa	18 Tu	18 Th	18 Su
19 Tu	19 Th	19 Su	19 Tu	19 Fr	19 Mo	19 Tu	19 Fr	19 Su	19 We	19 Fr	19 Mo
20 We	20 Fr	20 Mo	20 We	20 Sa	20 Tu	20 We	20 Sa	20 Mo	20 Th	20 Su	20 Tu
21 Th	21 Sa	21 Tu	21 Th	21 Su	21 We	21 Th	21 Su	21 Tu	21 Fr	21 Su	21 We
22 Fr	22 Su	22 We	22 Fr	22 Mo	22 Th	22 Fr	22 Mo	22 We	22 Sa	22 Mo	22 Th
23 Sa	23 Mo	23 Th	23 Sa	23 Tu	23 Fr	23 Sa	23 Tu	23 Th	23 Su	23 Tu	23 Fr
24 Su	24 Tu	24 Fr	24 Su	24 We	24 Sa	24 Su	24 We	24 Fr	24 Mo	24 We	24 Sa
25 Mo	25 We	25 Sa	25 Mo <small>Christmas Day</small>	25 Th	25 Su	25 Mo	25 Th	25 Sa	25 Tu	25 Th	25 Su
26 Tu	26 Th	26 Su	26 Tu <small>Boxing Day</small>	26 Fr	26 Mo	26 Tu	26 Fr	26 Su	26 We	26 Fr	26 Mo <small>August Bank Holiday</small>
27 We	27 Fr	27 Mo	27 We	27 Sa	27 Tu	27 We	27 Sa	27 Mo <small>Spring Bank Holiday</small>	27 Th	27 Sa	27 Tu
28 Th	28 Sa	28 Tu	28 Th	28 Su	28 We	28 Th	28 Su	28 Tu	28 Fr	28 Su	28 We
29 Fr	29 Su	29 We	29 Fr	29 Mo	29 Th	29 Fr <small>Good Friday</small>	29 Mo	29 We	29 Sa	29 Mo	29 Th
30 Sa	30 Mo	30 Th	30 Sa	30 Tu		30 Sa	30 Tu	30 Th	30 Su	30 Tu	30 Fr
	31 Tu		31 Su	31 We		31 Su		31 Fr		31 We	31 Sa

KS3  
Rotation  
A

Pathways  
1  
5 weeks

KS3  
Rotation  
A  
7 weeks

KS3  
Rotation  
B  
7 weeks

KS3  
Rotation  
B  
7 weeks

Pathways  
2  
5 weeks

# Curriculum Year 9

## 2023 - 2024

		1	2	3	4	5	6	7	8	9	10	11	12	13	14	15	16	17	18	19	20	21	22	23	24	25	26	27	28	29	30	31	32	33	34	35	36	37	38	39	40						
																						Block A				Block B				Block C				Block D													
Year 9	S	Ma	Ma	Ma	Ma	Ma	Ma	Bi	Bi	Ch	Ch	Ph	Ph	En	En	En	En	En	En	Re	Re	Re	Re	Pe	Pe	Fr	Fr	Sh	Sh	Mu	Mu	Dr	Dr	Gg	Gg	Hi	Hi	Te	Te	Te	Bs						
	T	Ma	Ma	Ma	Ma	Ma	Ma	Bi	Bi	Ch	Ch	Ph	Ph	En	En	En	En	En	En	Re	Re	Re	Re	Pe	Pe	Sh	Sh	Fr	Fr	Gg	Gg	Mu	Mu	Hi	Hi	Dr	Dr	Te	Te	Bs	Te						
	A	Ma	Ma	Ma	Ma	Ma	Ma	Bi	Bi	Ch	Ch	Ph	Ph	En	En	En	En	En	En	Re	Re	Re	Re	Pe	Pe	Fr	Fr	Sh	Sh	Hi	Hi	Gg	Gg	Cp	Cp	Ar	Ar	Te	Bs	Te	Te						
	L	For the first 28 weeks there will																																													
	B	be two lots of Rotation A and																																													
	N	two of Rotation B. This means																																													
		that all students will study all																																													
		subjects. The rotation is between																																													

		1	2	3	4	5	6	7	8	9	10	11	12	13	14	15	16	17	18	19	20	21	22	23	24	25	26	27	28	29	30	31	32	33	34	35	36	37	38	39	40
		Art, Music , Drama and Computing who will alternate as shown in the group highlighted in Red on the right.																				Block A				Block B				Block C				Block D							
Year 9	S	Ma	Ma	Ma	Ma	Ma	Ma	Bi	Bi	Ch	Ch	Ph	Ph	En	En	En	En	En	En	Re	Re	Re	Re	Pe	Pe	Fr	Fr	Sh	Sh	Ar	Ar	Cp	Cp	Gg	Gg	Hi	Hi	Te	Te	Te	Bs
	T	Ma	Ma	Ma	Ma	Ma	Ma	Bi	Bi	Ch	Ch	Ph	Ph	En	En	En	En	En	En	Re	Re	Re	Re	Pe	Pe	Sh	Sh	Fr	Fr	Gg	Gg	Ar	Ar	Hi	Hi	Cp	Cp	Te	Te	Bs	Te
	A	Ma	Ma	Ma	Ma	Ma	Ma	Bi	Bi	Ch	Ch	Ph	Ph	En	En	En	En	En	En	Re	Re	Re	Re	Pe	Pe	Fr	Fr	Sh	Sh	Hi	Hi	Gg	Gg	Mu	Mu	Dr	Dr	Te	Bs	Te	Te
	L	Ma	Ma	Ma	Ma	Ma	Ma	Bi	Bi	Ch	Ch	Ph	Ph	En	En	En	En	En	En	Re	Re	Re	Re	Pe	Pe	As	As	As	As							Bs	Te	Te	Te		
	B	Ma	Ma	Ma	Ma	Ma	Ma	Bi	Bi	Ch	Ch	Ph	Ph	En	En	En	En	En	En	Re	Re	Re	Re	Pe	Pe	Te	Te	Bs	Te	Cp	Cp	Hi	Hi	Ar	Ar	Gg	Gg	Sh	Sh	Fr	Fr
	N	Ma	Ma	Ma	Ma	Ma	Ma	Bi	Bi	Ch	Ch	Ph	Ph	En	En	En	En	En	En	Pe	Pe	Re	Re	Re	Re	Te	Bs	Te	Te	Gg	Gg	Dr	Dr	Hi	Hi	Mu	Mu	Sh	Sh	Sh	Sh
																						Bs	Te	Te	Te									As	As	As	As				

		1	2	3	4	5	6	7	8	9	10	11	12	13	14	15	16	17	18	19	20	21	22	23	24	25	26	27	28	29	30	31	32	33	34	35	36	37	38	39	40
																										Block A				Block B				Block C				Block D			
Year 9	S	For the last 10 weeks students will have a choice of one subject from each block. There will be an opportunity to change half way through to give more flexibility. Those interested in Sport & Coaching will have a chance to try that out in normal PE lessons												En	En	En	En	En	En	Re	Re	Re	Re	Pe	Pe	Fr					Gg					Gg					Fr
	T													En	En	En	En	En	En	Re	Re	Re	Re	Pe	Pe	Sh					Gg					Hi					Sh
	A													En	En	En	En	En	En	Re	Re	Re	Re	Pe	Pe	Fr/Sh					Hi					Hi					Fr/Sh
	L																									Te					Mu					Mu					Te
	B													En	En	En	En	En	En	Re	Re	Re	Re	Pe	Pe	Tf					Ar					Ar					Tf
	N													En	En	En	En	En	En	Pe	Pe	Re	Re	Re	Re	Bs					Cp					Cp					Bs
																						Im																	Im		
																						As																	As		

# Why is the Pathways section split into two?

- An opportunity to try out subjects with the flexibility to make changes if you find they are not right for you.
- To make sure your final choice is fully informed so you are happy with the subjects you will take to GCSE and beyond ....
- To give you the full two years at Key Stage 4 to learn and achieve your best in every subject you take.

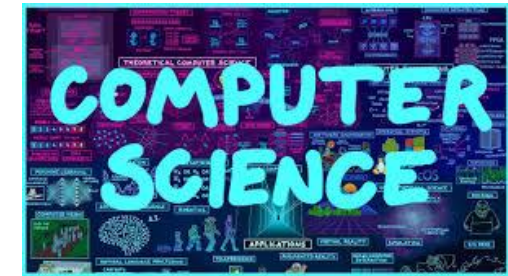
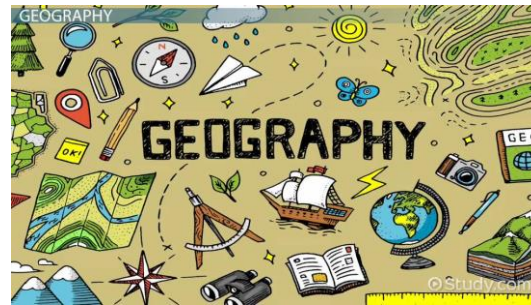




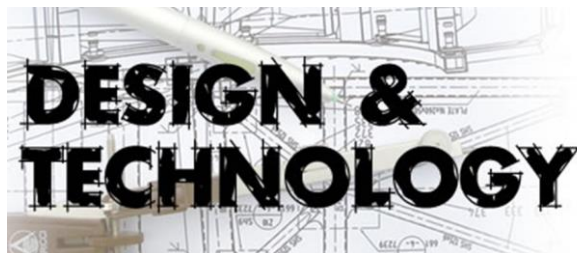
# What happens next?

- Pathways Assemblies in the **Spring term of 2024**

**History**  
is WHO we are and  
WHY we are the way we are.  
History is not just the *Past*.  
**History** is the **PRESENT**.



Year 8  
Pathways  
2024-2026  
Subject  
Assemblies



# What happens next?

- Pathways Assemblies in the Spring term of 2024
- Pathways Evening and Fair on **Wednesday 28<sup>th</sup> February 2024**





# What happens next?

- Pathways Assemblies in the **Spring term of 2024**
- Pathways Evening and Fair on **Wednesday 28<sup>th</sup> February 2024**
- Students make their initial choices – **one from each block**

Block A	Block B	Block C	Block D
French	Geography	Geography	French
Spanish	History	History	Spanish
Design & Technology	Music	Music	Design & Technology
Food & Nutrition	Art & Design	Art & Design	Food & Nutrition
Textile Design	Drama	Drama	Textile Design
Business & Economics	Computer Science	Computer Science	Business & Economics
Creative iMedia			Creative iMedia
ASDAN			ASDAN

# What happens next?

- Pathways Assemblies in the **Spring term of 2024**
- Pathways Evening and Fair on **Wednesday 28<sup>th</sup> February 2024**
- Students make their initial choices – **one from each block**
- After first 5 weeks, students may change **up to two** subjects so that you have a chance to try out all the subjects you are interested in studying

# What happens next?

- Pathways Assemblies in the **Spring term of 2024**
- Pathways Evening and Fair on **Wednesday 28<sup>th</sup> February 2024**
- Students make their initial choices – **one from each block**
- After first 5 weeks, students may change **up to two** subjects
- At the end of the summer term, students choose the **THREE** subjects they wish to continue to GCSE

